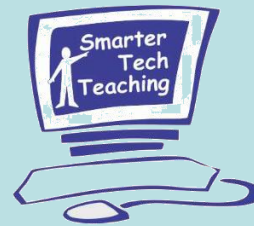


Using PowerPoint *with a*



SMART Board

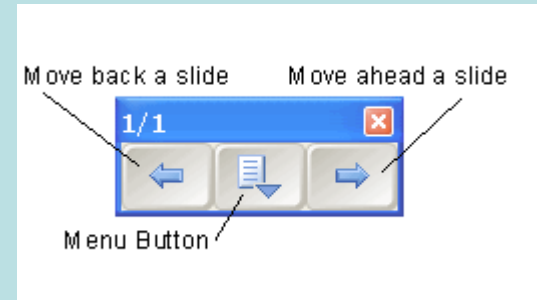


Presented by Laura Bogush

www.SmarterTechTeaching.com

Navigating Between Slides

- Slide Show Toolbar



- Lower left corner icons

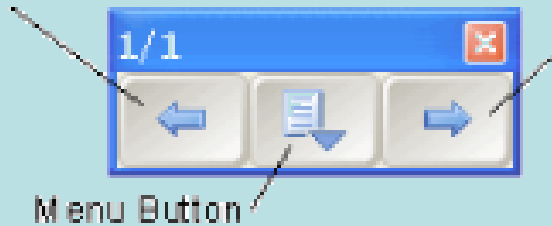


- Double Tap

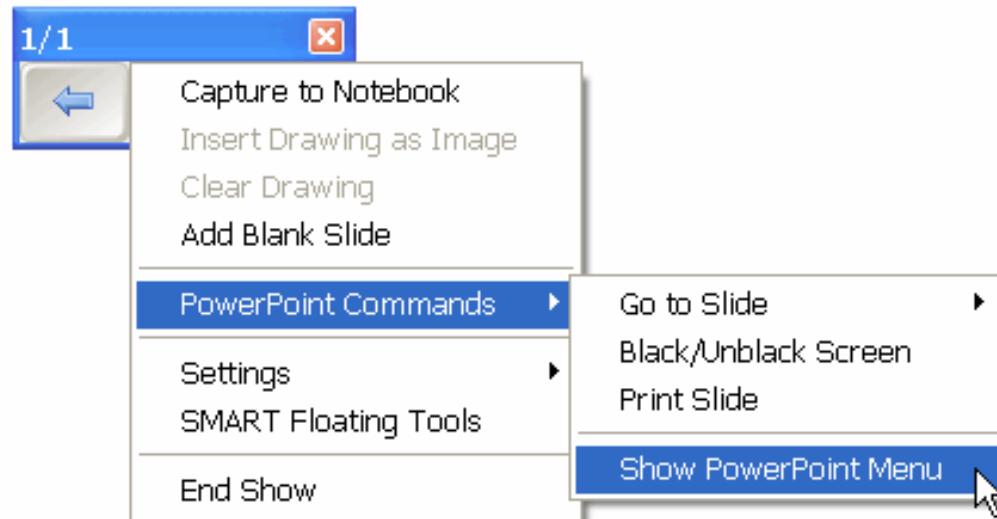
To advance: tap then tap to right

To go back: tap then tap to left

Access the PowerPoint Menu

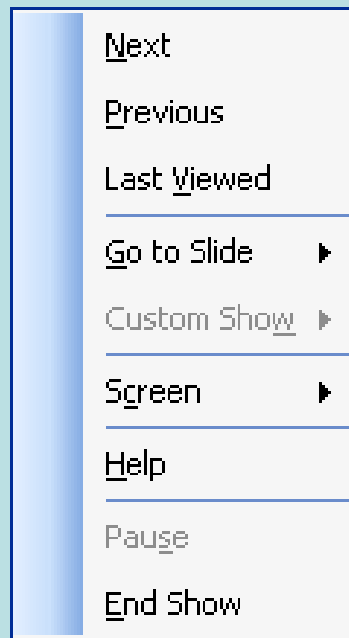


Touch center arrow
to reveal menu



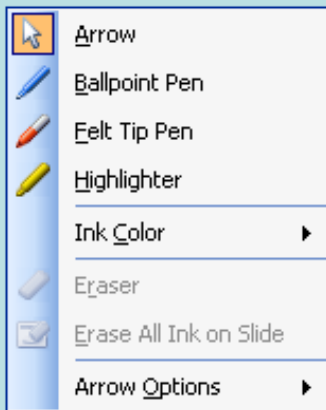
Access the PowerPoint Menu

- Look for the icons in the lower left corner.
- Touch rectangle to reveal menu.



Access PowerPoint Pens and Arrow

- Look for the icons in the lower left corner.
- Touch the slant (pen) to reveal menu.
- The marks are erased automatically when you move to the next slide.



Smart Ink Aware in PowerPoint

- Write with a pen from the pen tray directly on the slide.
- Marks will disappear when you move to the next slide.

- To save the writing,

Select **Insert Drawing as Image** to integrate your note into the slide

OR

Select **Capture to Notebook** to save an image of the slide and the note
on a new Notebook page. .

Smart Ink Aware

continued

To save all notes with all the slides in the current PowerPoint file

- Press the **Menu** button on the SMART toolbar.
- Select **Settings** and select **Save Drawing at End of Show**.
- When you reach the end of your slide show, save your PowerPoint file.
- Your notes are saved with each slide.

Floating Tools



Right mouse click

Pens

Keyboard

Eraser

Highlighters

Lines and shapes

And more!

Can be customized!

Customize Floating Tools

Customize Floating Tools

Add or remove items by dragging them to or from the toolbar

Pen	Eraser	Keyboard	Recorder	Calculator	Freehand Capture
Creative Pen	Line	Notebook	Video Player	Screen Capture Toolbar	Print Screen
Highlighter	Shape	Welcome Center	Screen Shade	Orient	
Shape Pen	Undo	Instant Conferencing	Spotlight	Area Capture	
Magic Pen	Right-click	Magnifier	Pointer	Full Screen Capture	

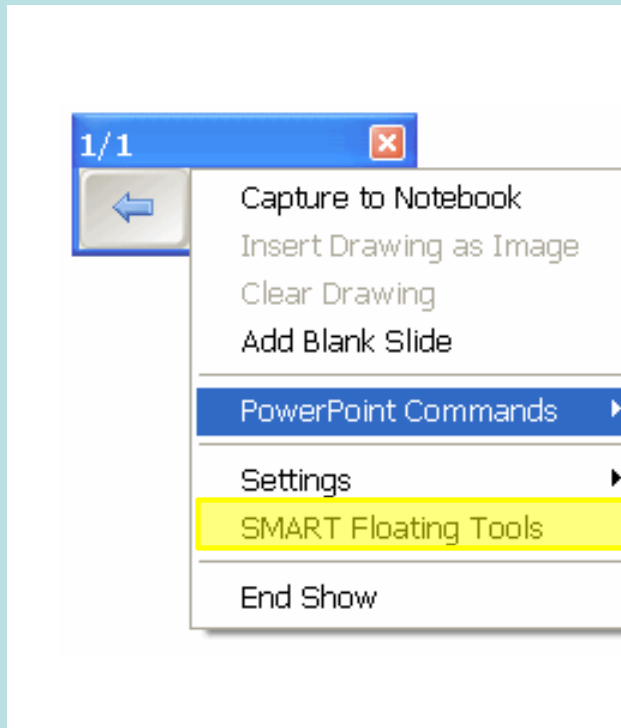
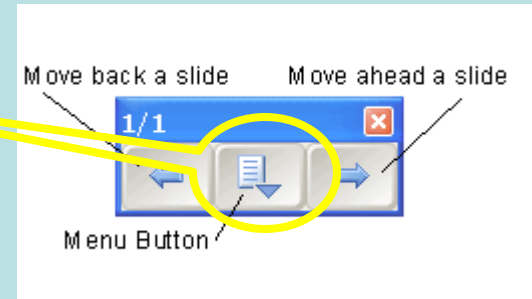
Columns: + -

Restore Defaults

Done

If you don't see the Floating Toolbar . . .

Click on the center menu button on the toolbar.



Click on SMART Floating tools to view.

SMART Presentation Tools

 **Screen Shade**

 **Spotlight**

 **Magnifier**

 **Pointer**

TIP! Add to the Floating Toolbar for easy access!

SMART Recorder



- Enables you to record a video file of your presentation

Making PowerPoint

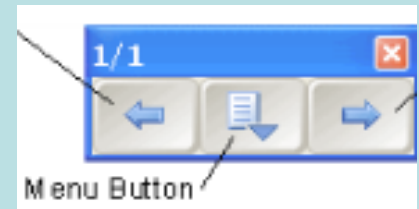
Interactive

Plan opportunities for writing

Reasons to Write

Save your Writing from Menu Button

- Add as image to PowerPoint
- Use Capture to Notebook from toolbar menu
- Print slide (menu to PowerPoint Commands)



Need to write, but didn't plan?

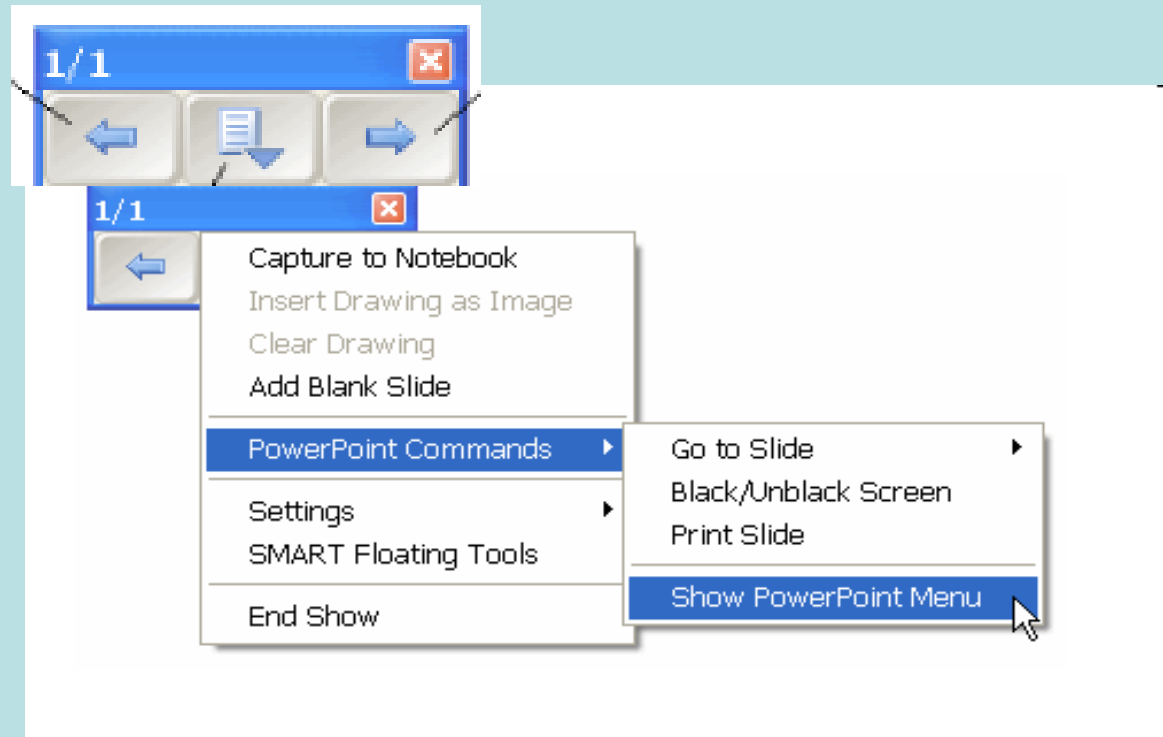
Add a Blank Page!



A screenshot of a PowerPoint navigation toolbar. The toolbar is blue and contains three buttons: a left arrow, a document icon with a downward arrow, and a right arrow. A context menu is open over the document icon button. The menu items are: 'Capture to Notebook', 'Insert Drawing as Image', 'Clear Drawing', 'Add Blank Slide', 'PowerPoint Commands', 'Settings', 'SMART Floating Tools', and 'End Show'. The 'PowerPoint Commands' item is highlighted in blue and has a submenu open to its right. The submenu items are: 'Go to Slide', 'Black/Unblack Screen', 'Print Slide', and 'Show PowerPoint Menu', which is also highlighted in blue. A mouse cursor is pointing at the 'Show PowerPoint Menu' option.

Want to pause the presentation?

Black/Unblack Screen



Insert a Hyperlink . . .

- To a website

**Click here to find out more about
PowerPoint on a SMART Board**

Attach links to
words, clip art, or
the web address
itself!



<http://www.youtube.com/watch?v=2Zt6sMbFlp4>

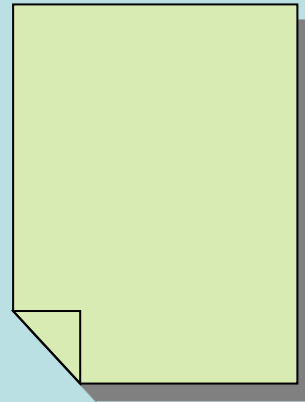
REMEMBER!

Hyperlinks work only in presentation mode!

Insert a Hyperlink . . .

- To another document on your computer

Click the paper
then complete the
worksheet.



REMEMBER!

Hyperlinks work only in presentation mode!

Insert a Hyperlink . . .

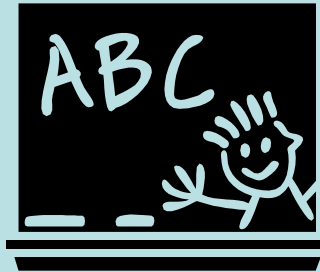
- To another slide in your presentation
 - ✓ Question and Answer Tutorial
 - ✓ Choose a link for more information about a topic

REMEMBER!

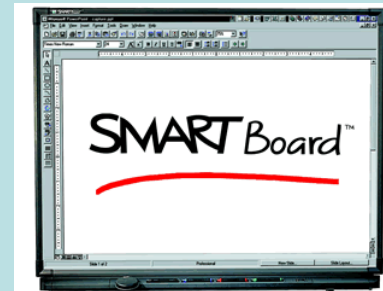
Hyperlinks work only in presentation mode!

Question #1

Click on the tool that integrates technology to enhance instruction.



a chalkboard

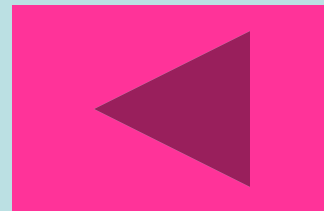


a SMART Board

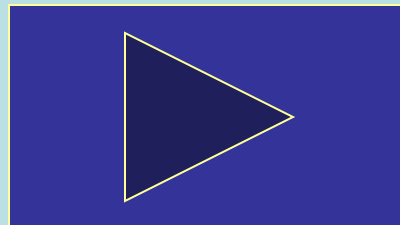
Ooops! 



Try again!



You are so smart!



Click on a SMART Product to learn more



This is the SMART Podium



Podium products enable you to effortlessly control any presentation and bring it to life – all you have to do is connect your interactive pen display to a computer and projector. Write over slides in digital ink, save your notes, access any website or multimedia file and project your work onto a large screen to give your audience a truly interactive experience.

Powered by the same award-winning software as SMART Board interactive whiteboards, Podium interactive pen displays are the perfect presentation tool.





This is the SMART Response System

The SMART Response System provides a direct wireless connection between you and your students. Now you no longer have to wonder if students understand what you've taught them. They can tell you with the click of a button.

The SMART Response System is designed to enhance interactive teaching and learning. With it, you display or speak prepared or *ad hoc* questions, students anonymously key in answers with their remote, and responses are tallied, then displayed on a projection screen or interactive whiteboard. Tallying and displaying results occurs immediately.





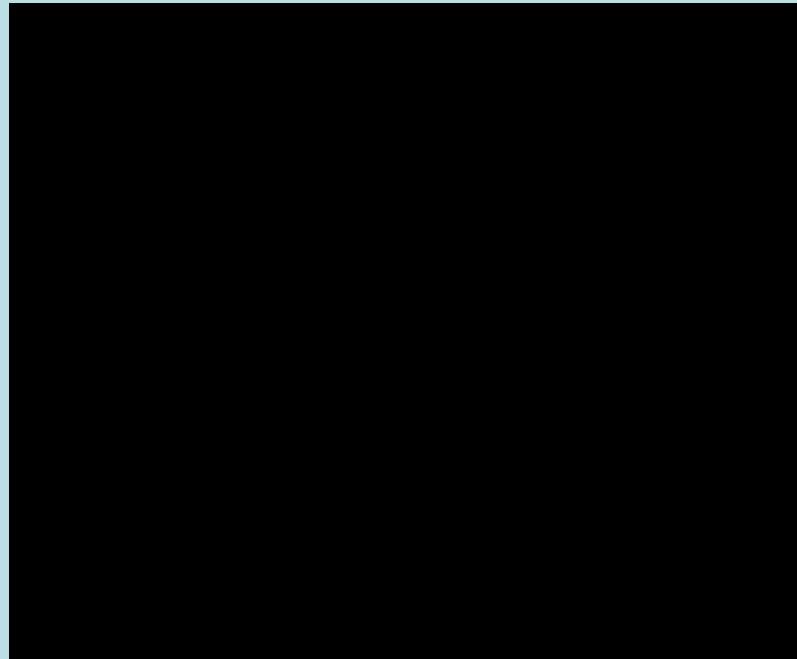
This is a SMART Slate

With SMART Slate you can interact wirelessly with your SMART Board interactive whiteboard or SMART Podium interactive pen display from 52 feet (16 m) away. The battery-free tethered pen lets you control any software application, write notes and highlight information in digital ink.

SMART Slate wireless slate enables you to teach from anywhere and allows students to interact with information from their seats. Multiple SMART slate users can write at the same time as someone at the SMART Board interactive whiteboard.



Insert a Video Clip



Click to start and stop

Or

Set to start automatically

Insert a Sound

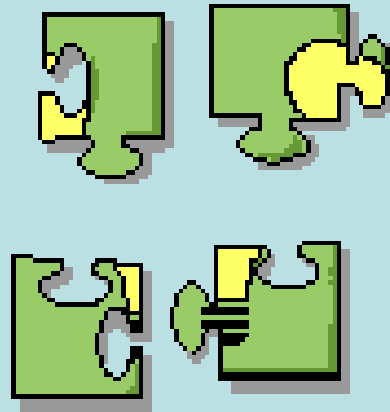
Sound can be set to start automatically

Sound can be set to start when clicked 

Sound can be attached to an object.



*Now you're ready to
put the pieces together*



to create your own ideas!